

BOARD OF EDUCATION

Attachment: Consent

5

PALO ALTO UNIFIED SCHOOL DISTRICT

Date:

02.09.10

TO: Dr. Kevin Skelly, Superintendent of Schools

FROM: Bob Golton, Co-CBO and Bond Program Manager

SUBJECT: Authorization to Issue a Contract in an Amount Not to Exceed \$355,000 for a District Student Information System

STRATEGIC PLAN INITIATIVE

Budget Trends and Infrastructure

BACKGROUND

There are number of critical functions schools must perform that involve tracking student data. These include everything from enrolling students in school to generating report cards to completing required state reports. To perform these functions, and many more, schools utilize a Student Information System (SIS).

The District's current SIS is SASI XP, initially purchased in 1995. This product line was acquired in the course of time by Pearson Education Inc. Recently, Pearson Education, Inc. announced that support for SASI would be discontinued at the end of the 2009-10 school year. At the end of the support life, both technical support and upgrades will end. Among other things, this means the system will not support mandatory changes in state and county reporting. Pearson also indicated they would not provide a direct upgrade path to any of their other products. This meant that PAUSD needed to select a new Student Information System.

Starting in 2008, a group of thirty staff members, including administrators, teachers, and technologists, from across the district began to review alternative solutions. In late 2008 and early 2009, a number of products were reviewed, including Pearson's new product, PowerSchool, and other widely used products. In the fall of 2009, the Interim Director brought the team back together to review the previous finalists and also brought Infinite Campus into the discussion. Finally, in November and December of 2009, Ann Dunkin, the new Director of Technology, brought the full team back together along with additional staff and district parents. This expanded group of 35 people reviewed and evaluated products.

In early December, the group selected Infinite Campus as the finalist. The team then completed due diligence, including technical and security assessments and reference checks. Infinite Campus received positive results on all assessments and reference checks.

PROPOSAL

The group has chosen to recommend Infinite Campus to the Board. It has been adopted state-wide in four states. The Bureau of Indian Education and the Department of Defense schools have also adopted it. This means that it meets extremely strict security standards. It is being used in

thousands of school districts to manage the data of over 5 million students. There are 21 school districts in California currently using Infinite Campus and 14 more that will be online in the next year. Bay Area districts that have adopted or are adopting this system include Franklin-McKinley Elementary School District, Eastside UHSD, Sequoia UHSD, South San Francisco USD, Ravenswood USD, San Ramon Valley USD, San Jose USD and Fremont UHSD.

FISCAL IMPACT

California school districts are allowed to “piggyback” on prices obtained by another district’s bidding process. In this particular case, Sequoia High School District went through an extensive selection and bidding process and PAUSD will utilize their pricing structure. There are no school districts receiving a better pricing structure than Sequoia and, therefore, than Palo Alto Unified School District.

The total cost of the Infinite Campus contract for the 2009-2010 start-up implementation is estimated not to exceed \$182,000. The total cost of the 2010-2011 licensing, maintenance, and support is estimated not to exceed \$173,000. These costs have been budgeted. As for following years, it is anticipated that ongoing maintenance costs will largely be offset by a reduction in spending with a number of vendors whose services will be replaced by Infinite Campus.

RECOMMENDATION

It is recommended at the Board of Education authorize PAUSD to enter into a contract with Infinite Campus in a not to exceed \$355,000 for the implementation, licensing, maintenance, and support of a Student Information System for the 2009-10 and 2010-11 school years.



Student Information System

Selection Process & Decision

January 26, 2009

1



What is a Student Information System (SIS)?

- Tracks student data including household information, grades and discipline records.
- Tracks staff information such as qualifications and experience.
- Manages school scheduling.
- Enables state and county reporting.

- And much more...

2

Why Replace Our SIS?

- SASI, our current system, which was implemented in 1995, has been discontinued by its supplier.
- Once the system is discontinued:
 - No support for system failures or errors
 - No updates for state reports or anything else
- SASI will be unusable in the 2010-11 school year.

3

Selection Process

- Selection process started in 2008
- Refreshed in summer 2009
- Final selection in December 2009
- Technical Review & Reference Checking, Dec 2009 and Jan 2010

- Selection team of approx. 35 administrators, teachers and parents
- Team represented users of all major SIS functions

4



Selection Criteria

- Requirements met/planned (25%)
- Product maturity, market penetration, ongoing development, market commitment (20%)
- Review Team Scoring (20%)
- Technology (20%)
- Cost (15%)

5



Decision

Infinite Campus was selected

Key differentiators

- 100% browser based and no limitation on browsers used
- Technical capabilities and security
- Attractive hosting model
- Met the greatest number of features
- Gartner identified as market leader
- Competitive pricing

6

Infinite Campus Benefits

- Replaces multiple legacy applications with one integrated system
 - Improves functionality
 - Reduces data entry and eliminates duplicate data entry
 - Eliminates data transfer from one system to another
 - Reduced cost
- Future systems can be integrated as IC functionality increases – library, asset management, HR, business
- Truly can be a platform to run district operations if we desire

7

What will it cost?

Cost	'09-10	'10-11	'11-12	'12-13
Infinite Campus License & Maintenance	\$0	\$147,800 [^]	\$147,800 [^]	\$147,800 [^]
Infinite Campus Implementation	\$181,556 [*]	\$25,000 [*]	\$0	\$0
Additional Implementation Costs	\$100,000 ^{**}	\$25,000 ^{**}	\$0	\$0
Total	\$281,566	\$197,800	\$147,800	\$147,800

Legacy Applications	\$141,786	\$64,816	\$51,100	\$0
---------------------	-----------	----------	----------	-----

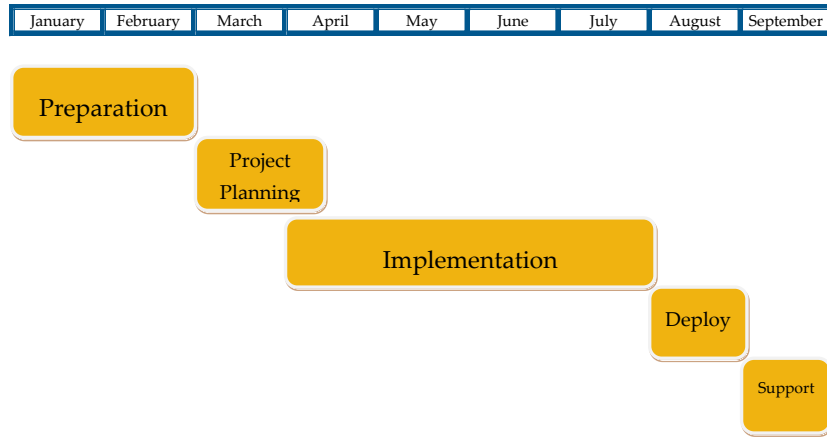
Note: For comparison purposes, numbers show zero enrollment growth. All apps are priced per student and costs will grow with enrollment.

[^]A portion of this amount is erate-able, approx. \$10K reduction with erate approval.

^{*}First year includes \$30K contingency. Second year estimate of \$25K is a contingency.

^{**}Additional implementation costs include project management and data cleaning. ⁸

Implementation Timeline



Our Choices

Do Nothing	Infinite Campus	Another Solution
<ul style="list-style-type: none"> •SASI goes out of support •District can not submit state reports •State funding lost •District must revert to paper-based processes •Increased costs for administration and compliance •Increased teacher workload 	<ul style="list-style-type: none"> •Best of breed system implemented •New system ready for '10/'11 school year •Over time, district consolidates systems and reduces costs •District benefits from improved data integrity 	<ul style="list-style-type: none"> •District starts '10/'11 school year without a new SIS. •District can not submit state reports until new system is implemented •Possible loss of state funds •If there is a SASI failure, district must revert to paper-based processes •Since we believe we have selected the best solution, any solution selected will provide less benefit to the district